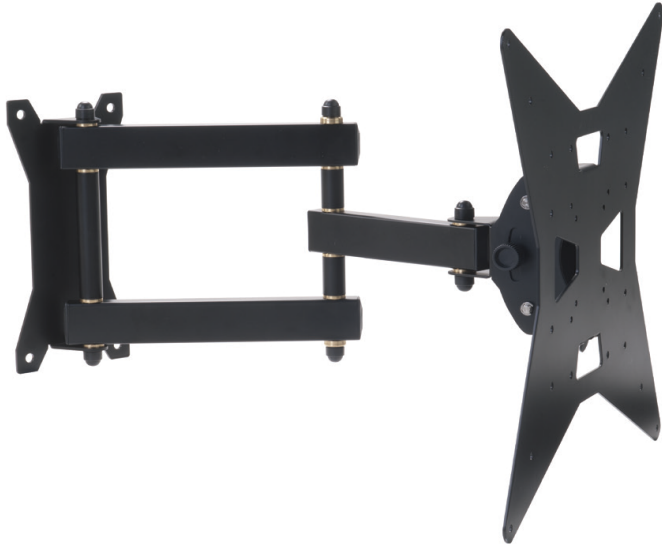




FLAGGY L - WALL SUPPORT SYSTEM VESA 400X400, BLACK

SKU: 14945



Net weight	4,00 Kg
Min/Max extension	140mm – 500mm
MAX LOAD	25 kg
Link with	VESA up to 400-400
Tilting	+/- 12°
Swivel	+/- 120°
Material	Steel
Treatments	powder-coated black/white
Color	Black

Categories: [Flat Panel Mounts](#), [Flat Panel Wall Mounts](#)

Color: Black

The Flaggy Series is the new robust wall support system for articulating display mounting, featuring maximum stability. Its special friction brass adjusting mechanism assures the positioning of the display in an easy and secure manner, maintaining a precise and stable mount. Flaggy is designed as an optimal solution both for a “closed” position occupying a minimum amount of space, and the maximum extension, guaranteeing that the display is positioned in an extremely solid and secure manner.

Also available in:

- [White \(Cod: 14947\)](#)

[QUOTATION REQUEST](#)

x



REQUEST A QUOTATION

Name *

Surname *

Company *

Email *

Message

I have read the information on the Privacy Policy and authorize the processing of personal data (*)

[Privacy Policy](#)

x



GALLERY

