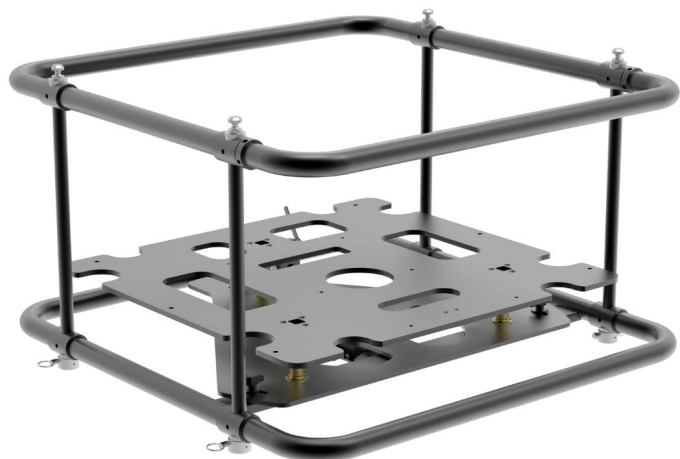




## KALIBRO F STRONG, STACKING AND RIGGING FRAME CAGE EPSON EP-25K U, EB-30K U

SKU: 19474



<b>Material</b>	Iron – Aluminum
<b>Pitch</b>	+/ $3^{\circ}$
<b>Roll</b>	+/ $3^{\circ}$
<b>Yaw</b>	+/- $4^{\circ}$
<b>Dimension</b>	945 x 950 _ 535 (600) [mm]
<b>packaging</b>	980 x 980 _ h630 [mm]
<b>Color</b>	Black
<b>Treatments</b>	Powder coating

---

Categories: [Kalibro](#)

Kalibro is a cage with a single body made of iron tubes, its structure is extremely resistant and ensures perfect fastening to ceiling or wall mounts for landscape, portrait or floor projection systems.

Micrometric adjustment on three 3 rotation axes is possible thanks to specific knobs or ratchets, thus making it possible to perfectly centre the lens perpendicular to the projection surface, in order to improve focusing, image definition or to save projector power.

The micrometric adjustment on the 3 rotation axes takes place by means of special knobs or ratchet wrenches, thus obtaining the perfect centering and perpendicularity of the lens with respect to the projection surface, in order to improve the focus, the definition of the image or saving on the power of the projector.

*\*Compatible with these projectors:*

EPSON  
EB-25K U



EB-30K U

### Stacking

Approved for a maximum of 3 stacking cage (Ground Stack)

Approved for a maximum of 2 stacking cage (Suspended Stack)

### IMQ Certification

EN 62368-1:2014+A11:2017 clause 8.7

### Compatibility

With 3rd party stacking frame cage



[QUOTATION REQUEST](#)

x

## REQUEST A QUOTATION

Name \*

Surname \*

Company \*

Email \*

Message



I have read the information on the Privacy Policy and authorize the processing of personal data (\*)

[Privacy Policy](#)

Send

x



## GALLERY

