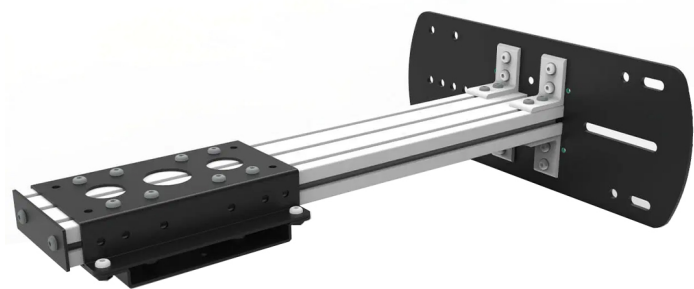




ARM, SILVER AND BLACK

SKU: 21491



installation	A traliccio (clamp non include), Support system to the ceiling, Support system to the wall
Mode	Floor, Landscape, Portrait
Material	Iron-Aluminum
Treatments	Powder coated
Color	Silver, Black
buttonhole adjustment range	From 200 to 400 mm
clamp fixing screw	M12
standard attachment	YES
Dimension	200 x 500 _ 680 [mm]
packaging	220 x 520 _ 700 [mm]

Categories: [Kite - Falcon](#)

It is an extremely versatile option, enabling projector installation in many different configurations.

- 1) Ceiling mount: floor or portrait projection;
- 2) Wall mount: landscape, floor or portrait projection;
- 3) Truss mount (clamps not included): landscape, floor or portrait projection.

Its versatility is given by the fact that the profile can be fastened to the installation plate in two different ways:

- A) Profile parallel to the plate



B) Profile perpendicular to the plate

It also allows the projector to slide along the profile itself (the standard size of which is 680mm but can be customised if specified in the order).

It has a standard EUROMET coupling, which means that all cages and options with such a standard coupling can be fitted to the ARM, making it possible to create very complex systems with multiple functions (tilt, rotations, etc...) using standard but modular products.

This code refers to the silver and black product but it's also available in:

- [Total Black \(Cod: 21500\)](#)

[QUOTATION REQUEST](#)

×

REQUEST A QUOTATION

Name *

Surname *

Company *

Email *

Message

I have read the information on the Privacy Policy and authorize the processing of personal data (*)

[Privacy Policy](#)



Send

x



GALLERY

