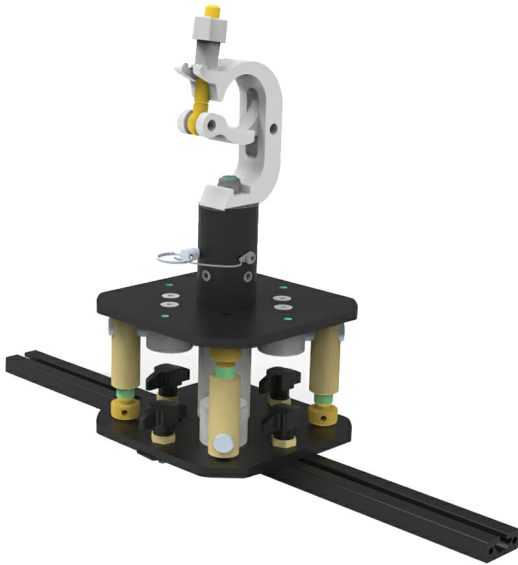




M TILT 1 CLAMP+ADAPTER +FLOOR BAR BETA

SKU: 24685



installation	Truss-mounted cage
Mode	Floor, Landscape
Material	Iron – Aluminum
Treatments	Powder coated
Color	Silver, Black
Roll	+/- 10°
Pitch	+/- 10°
rotation	360°
clamp fixing to truss	Ø 48 – 51 mm
SWL (SAFE WORKLOAD)	250 kg
clamp fixing screw	M10
Dimension	634 x 180 _ 380 [mm]
packaging	

Categories: [Matrix](#)

It is a bundle code that consists of 4 separate products that can be combined:

- M-Tilt with 1 clamp: tilting system (+/-10° on 2 projection axes with 360° angle) with single-camp truss fastening clamp.
- Adapter: a device to make the extra bar compatible with M-Tilt
- BETA Landscape/Floor Bar: Additional bar that can be placed on the back (REAR) or ON the cage and is only and exclusively compatible with the MATRIX BETA.

Although not included in this bundle, a MATRIX ALFA is required to use this bundle.



Possible uses of the bundle with this cage are:

- A) For rear mounting on the cage: horizontal truss mounting, floor projection, adjustable.
- B) For upper mounting on the cage: horizontal truss mounting, landscape projection, adjustable.

See the product pages for more details: 23400, 22629.

Compatible with cage **Matrix Alfa 22500*

Certification IMQ: EN 62368-1:2014+A11:2017 clause 8.7

[REQUEST A QUOTE](#)

x

REQUEST A QUOTE

Nome *

Cognome *

Azienda *

Email *

Messaggio *

Ho letto l'informativa sulla Privacy Policy e autorizzo il trattamento dei dati personali (*)

[Leggi la nostra Privacy Policy](#)

Invia



x



GALLERY

