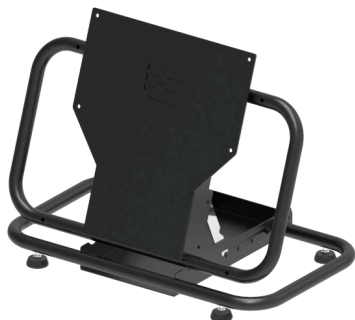




TILTING TV MONITOR STAND 400-200 - BLACK

SKU: 27051



Net weight	10 kg
Min/Max height	1040 – 1850 mm
Closed Length	710x480x160 mm
DIAGONAL OF THE MONITOR	up to 70"
Mount Rotates	360°
Tilt angle	From 20° to 80°
Material	Fe
Treatments	Black – Grey
Color	Black
Link with	VESA 75-75 100-100 100-200 200-200; 400-200

Categories: [Flat Panel Ground Mounts](#), [Flat Panel Mounts](#)

- the support is compatible with VESA monitors with 400X200 (mm x mm) holes.
- Possibility to regular the height of the monitor position by 22 cm.
- Tilt of the monitor at intervals ranging from 20° to 80°
- The support can be folded for easier transport, without the use of keys or accessories external of the packaging
- Container to also transport other components or radio controls.
- supplied with leveling feet.
- Supplied as an accessory but only on request there is a kit of four elegant and innovative design wheels, in the version with and without brakes.



GALLERY

