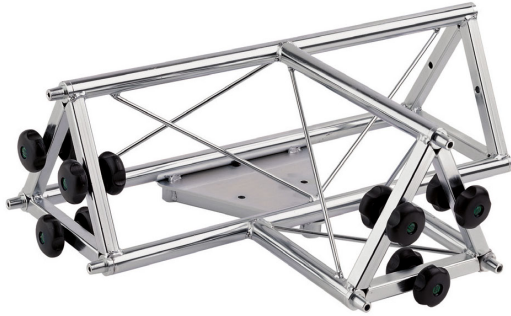




TRIANGULAR TRUSS, 4 WAYS "T"-STYLE, MALE, STEEL, GALVANIZED

SKU: 01193



Net weight	4,70 Kg
Closed Length	650 mm
Link with	ø15,3 mm (F) – ø15 mm (M)
Dim. M. attachment	ø 15 mm
Dim. F. attachment	ø 15,3 mm
Thickness	1,5 mm
Material	Fe ø25 mm
Treatments	Galvanization

Categories: [Trusses](#)

Triangular galvanized truss, 4-way "T"-style, L:625mm/ D:425mm with 225mm sides, made of ø 25mm steel tube, reinforced with ø 6mm welded wire and a forth channel to fix column. This module is comprised on one side of three male ø 15mm attachments, on the other side of three female ø 15,3mm attachments and on the lateral channel three male ø 15mm attachments. Link with other modules by coupling of attachments and fixing with three supplied couples of M8x60mm knobs.

[QUOTATION REQUEST](#)

x

REQUEST A QUOTATION



Nome *

Cognome *

Azienda *

Email *

Messaggio *

Ho letto l'informativa sulla Privacy Policy e autorizzo il trattamento dei dati personali (*)

[Leggi la nostra Privacy Policy](#)

Invia

x



GALLERY

