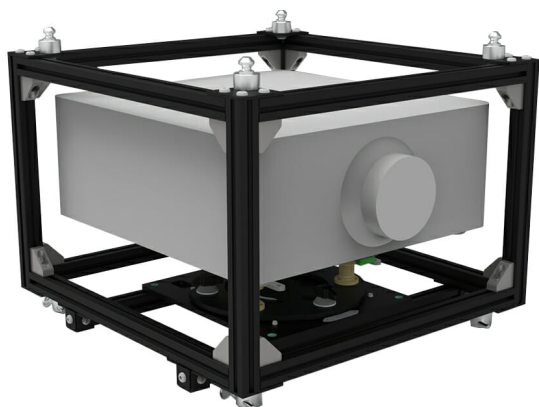




## UNIKA 30.03 - STACKING AND RIGGING FRAME CAGE - OPTOMA ZU1050

SKU: 23602



<b>Material</b>	Aluminum with iron reinforcements
<b>Dimension</b>	482,6 x 525,78 x 195,58 mm
<b>Profile section</b>	40 mm
<b>Cage dimensions</b>	
<b>Width_Lung_H (H with turned parts)</b>	
<b>Weight</b>	13,66 kg
<b>Pitch</b>	+/ $3^{\circ}$
<b>Roll</b>	+/ $3^{\circ}$
<b>Yaw</b>	+/- $5^{\circ}$
<b>packaging</b>	690 x 750 _ h470 mm
<b>cage weight without projector</b>	28,50 kg

---

Categories: [Unika](#)

Compatible with the videoprojector series **Optoma ZU1050 e 860** and similar.

It is an aluminium tubular profile frame (cross-section 30x30) with iron reinforcement bars, thus combining sturdiness, lightweight and ease of use. This is why it can be used for any PROJECTION type (Landscape, Portrait, Floor) and can adapt to any INSTALLATION method (truss, ceiling, wall and floor).

It is equipped with its own STACKING system:

A) For floor installation, it is type-tested for 3 cages:



B) For hanging installation, up to 2 cages.

The MICROMETRIC adjustment system on 3 rotation axes is based on the KITE system fastened to the structure (which can be easily removed without any tools, so that it can be used also without cage):

C) +/- 3° pitching;

D) +/- 3° roll;

E) +/- 4° yaw.

Together with the cage, you can order the FLIGHT-CASE (Cod:22813) to host the cage itself and is also equipped with an additional compartment 15x56x43cm which can also be divided by ordering a partition wall (Cod: 22827), up to maximum 2 partition walls.

**Certification IMQ:** EN 62368-1:2014+A11:2017 clause 8.7

[REQUEST A QUOTE](#)

×

**REQUEST A QUOTE**

Name \*

Surname \*

Company \*

Email \*

Message



I have read the information on the Privacy Policy and authorize the processing of personal data (\*)

[Privacy Policy](#)

Send

x



## GALLERY

