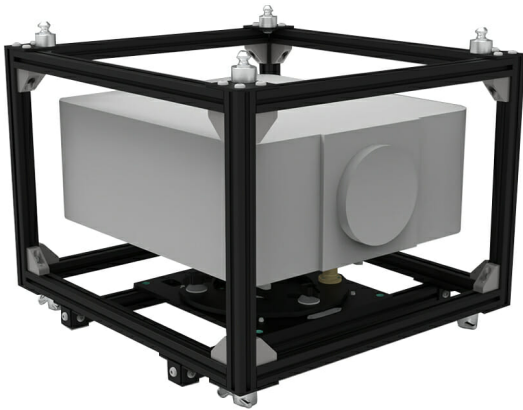




UNIKA 30.2 – SUPPORT FOR BARCO W6 AND W7 PROJECTORS

SKU: 23849



Material	Aluminum with iron reinforcements
Profile section	30 mm
Pitch	+/-3°
Roll	+/-3°
Yaw	+/- 4°
Cage dimensions	
Width_Lung_H (H with turned parts)	580 x 620 _ h410 (H495) mm
packaging	640 x 700 _ H535 mm

Categories: [Unika](#)

Compatible with the videoprojector series and similar.

It is an aluminium tubular profile frame (cross-section 30x30) with iron reinforcement bars, thus combining sturdiness, lightweight and ease of use. This is why it can be used for any PROJECTION type (Landscape, Portrait, Floor) and can adapt to any INSTALLATION method (truss, ceiling, wall and floor).

It is equipped with its own STACKING system:

- A) For floor installation, it is type-tested for 3 cages:
- B) For hanging installation, up to 2 cages.

The MICROMETRIC adjustment system on 3 rotation axes is based on the KITE system fastened to the structure (which can be easily removed without any tools, so that it can be used also without cage):

- C) +/- 3° pitching;



D) +/- 3° roll;

E) +/- 4° yaw.

Together with the cage, you can order the FLIGHT-CASE (Cod:22812) to host the cage itself and is also equipped with an additional compartment 15x56x46cm which can also be divided by ordering a partition wall (Cod: 22827), up to maximum 2 partition walls.

Certification IMQ: EN 62368-1:2014+A11:2017 clause 8.7

[REQUEST A QUOTE](#)

x

REQUEST A QUOTE

Name *

Surname *

Company *

Email *

Message

I have read the information on the Privacy Policy and authorize the processing of personal data (*)

[Privacy Policy](#)

Send



x



GALLERY

