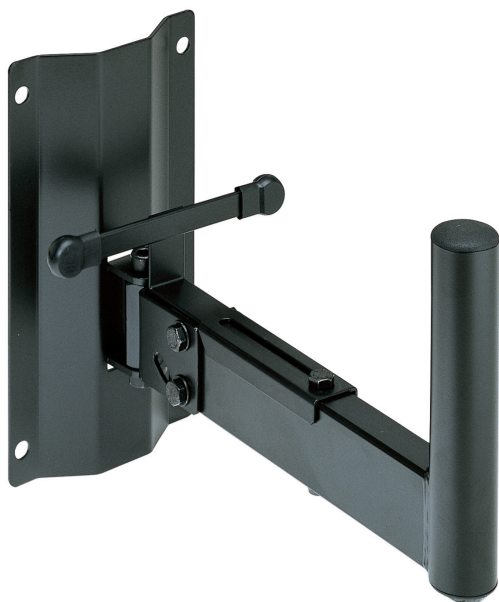




## WALL MOUNTING BRACKET, ADJUSTABLE, RAL 9005

SKU: 00498



<b>Net weight</b>	2,30 kg
<b>MAX LOAD</b>	40 kg
<b>Link with</b>	ø 36 mm
<b>Dim. M. attachment</b>	ø 35 mm
<b>Dim. F. attachment</b>	ø 36 mm
<b>Mount Rotates</b>	120°
<b>Tilt angle</b>	45°
<b>Thickness</b>	1,5/2/2,5 mm
<b>Material</b>	Fe
<b>Treatments</b>	RAL 9005

---

**Categories:** [Speaker Mounts](#), [Speaker Supports](#)

Adjustable wall mounting bracket with arm L=260 mm and ø 35 mm male attachment H=120 mm, to hold speaker. The arm has an adjustable support to clamp the speaker swivels on a horizontal plane and may be tilted. Position of support from centre of male attachment: min. 180 mm, max 260 mm. Wall plate 250x140 mm with 4 holes ø10 mm for bracket attachment.

[QUOTATION REQUEST](#)

x

**REQUEST A QUOTATION**



Name \*

Surname \*

Company \*

Email \*

Message

I have read the information on the Privacy Policy and authorize the processing of personal data (\*)

[Privacy Policy](#)

Send

x

